



Houtlaan 467
3016 DA Rotterdam

€ 4.000 p.m.



Alle kenmerken op een rij

Overdracht

Huurprijs	€ 4.000 p.m.
Aangeboden sinds	29 jul 2022
Status	verhuurd
Huurperiode	
Borgsom	
Servicekosten	
Aanvaarding	in overleg

Bouw

Woningcategorie	appartement
Type woning	
Soort woning	
Kozijnen	draaikiepramen

Indeling

Aantal kamers	
Aantal badkamers	1
Aantal toiletten	1
Kelder	nee
Zolder	nee
Garage	geen
Aantal woonlagen	1

Gebied en inhoud

Perceeloppervlak (m ²)	
Woonoppervlak (m ²)	130
Inhoud (m ³)	360



Ligging

Ligging

Energie

Verwarming

warmtepomp, stadsverwarming

Soort warm water

Beglazing

superisolerend

Isolatie

volledig

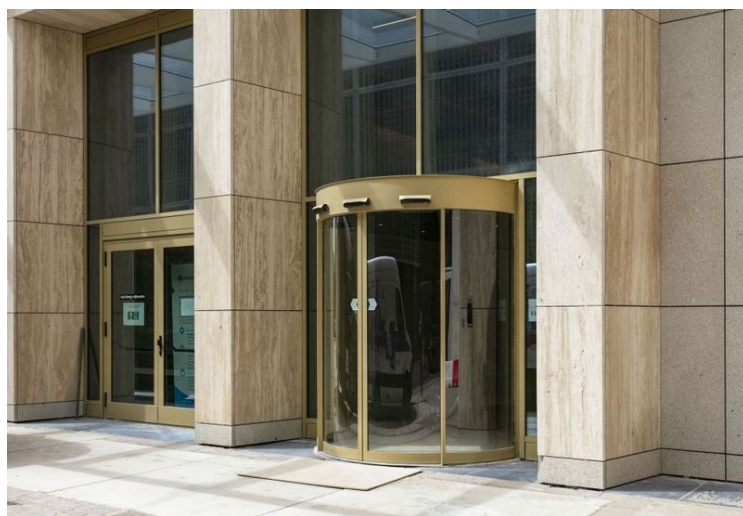
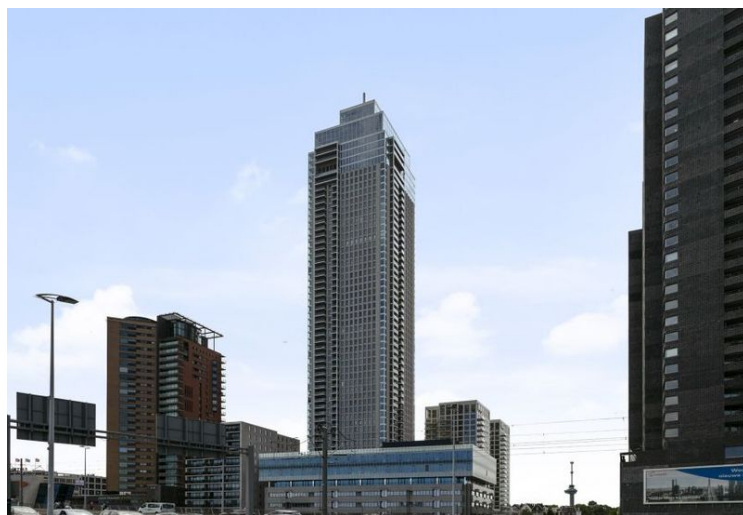
Energielabel

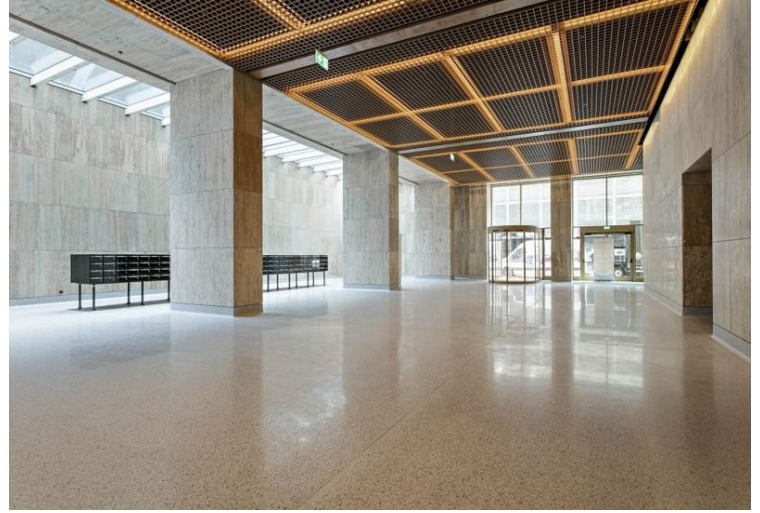
Energielabel

A++, vervaldatum: 17 jan 2032



Houtlaan 467 in beeld









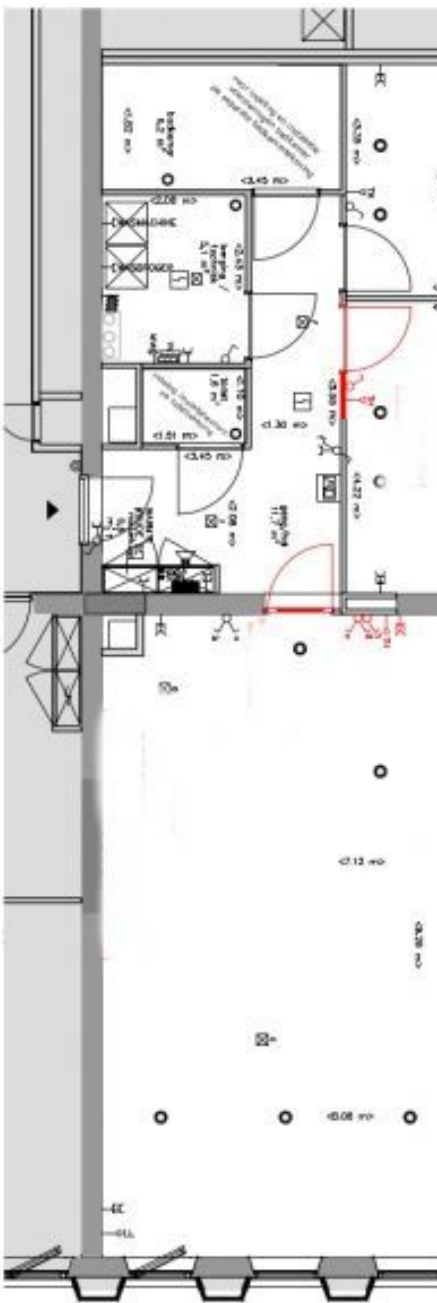












Uitvoersaat	opmerkingen	meten
door metsen	0,50	-
grint	0,00	-
		0,00

opmerking:
 - net op schaal, uitsluitend bekoord voor koperstekker!
 - maatvoering betreft circa meten en is indicatief
 - bepaalde ventilatie punten indicatief en nader te bepalen door installateur
 - bepaalde plafondsteunpunten en overige installatiecomponenten staan ter indicatie



barn
 Wonen
Bnr. 525

Project: **De Zalmhaven**
 Projectlocatie: **Woningbouw D20
 47e wijkdijping
 Ieperdijck**

Projectnummer: **8881**
 Tekeningnummer: **V-525**
 Datering: **(13-06-2019)**



Omschrijving Houtlaan 467

Stunning corner apartment in the newest landmark of Rotterdam. From the 47th floor of The Zalmhaven, you'll have a spectacular view of the city from 150 meters high. This luxurious home furthermore boasts a spacious living room, a bathroom and two bedrooms.

The Zalmhaven is the highest residential tower in the Netherlands and is located in the characteristic Scheepvaartkwartier. Classic and monumental buildings surround the new icon. Near regarded restaurants, shops, and cultural institutes like Kunsthal, Wereldmuseum and Depot.

Ground Floor

- Stylish central entrance where a service manager is always present

47th Floor

- Entrance and hallway
- Spacious living room (70 m²) with a spectacular view over Rotterdam
- Primary bedroom (17 m²)
- Second bedroom (14 m²)
- 2 spacious balconies (12 m² and 7 m²)
- Fully equipped SieMatic kitchen with cooking island
- Bathroom with bath, 2 sinks, and a toilet

Special details

- Indoor storage room 7 m² on the 4th floor
- Indoor bicycle storage
- A high parking space on the ground floor in a closed indoor parking garage.
- Unique living in an icon
- Perfect location
- The whole house has underfloor heating and cooling
- Energy label: A++
- Utilities water/electricity/internet/tv excluded
- Servicecosts included
- (Furnished or) Unfurnished
- Min 12 months (max 36 months)





Omschrijving Houtlaan 467

- Diplomat clause possible

When you would like to rent an apartment, please keep the following bullets in mind:

- You need to have a valid residence permit and a labor contract
- The income is minimal 3 times the monthly rent or you receive an appropriate housing allowance

Does this apartment not yet fully meet your preferences? Please contact us for our complete availability!





Huisportaal.nl
Vestdijk 180
5611 CZ Eindhoven

Tel. helpdesk: 085-782.00.00
Email: info@huisportaal.nl
Website: www.huisportaal.nl

IBAN: NL20.RABO.0156.0304.03
BTW: 8576.40.471.B.01
KVK Eindhoven: 68903162