



**Houtlaan 467**  
**3016 DA Rotterdam**

**€ 4.000 p.m.**



## All features in a row

### Transfer

Rent price	€ 4.000 p.m.
Offered since	29 jul 2022
Status	rent in use
Rental period	
Security deposit	
Service costs	
Acceptance	in consultation

### Construction

Property category	apartment
Property type	
Property sub type	
Framework	tilt-and-turn windows

### Layout

Number of rooms	2
Number of bedrooms	2
Number of bathrooms	1
Number of toilets	1
Basement	no
Attic	no
Garage	none
Number of floors	1

### Area and content

Plot area (m <sup>2</sup> )	
Living area (m <sup>2</sup> )	130
Content (m <sup>3</sup> )	360



## Location

Location

## Energy

Heating

heatpump, district heating

Type of hot water

Glass

superinsulating

Insulation

complete

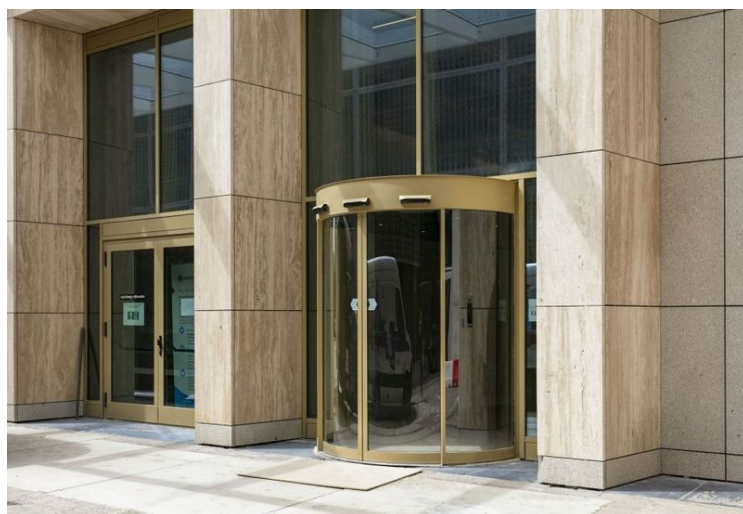
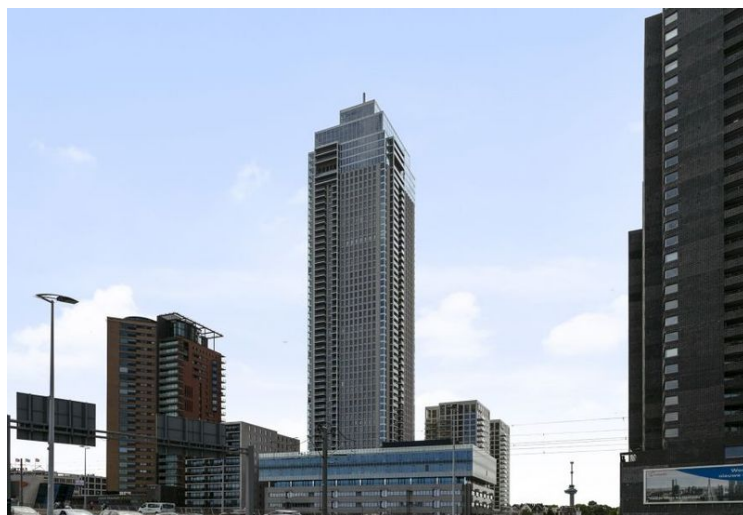
## Energy label

Energy label

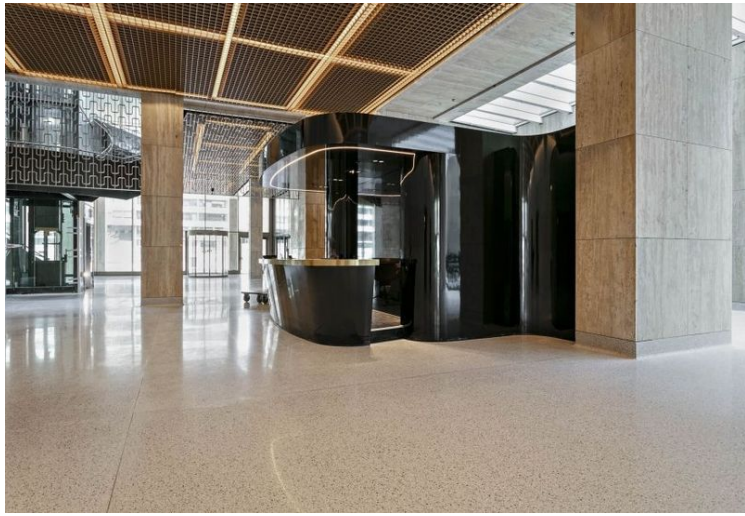
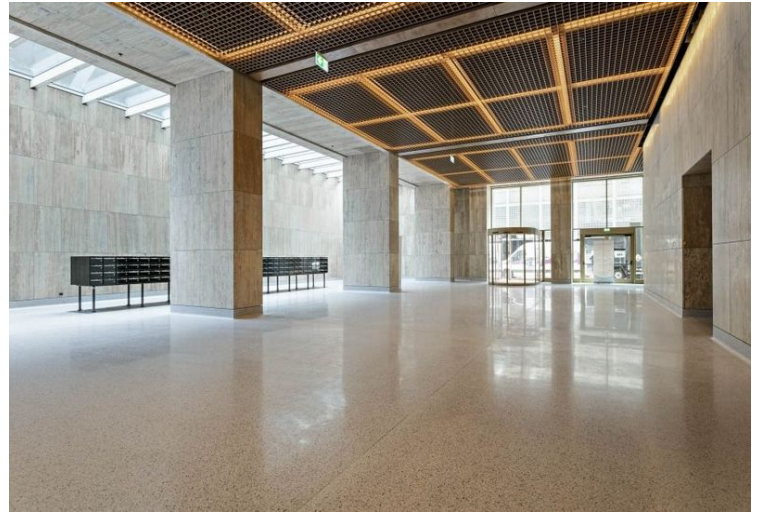
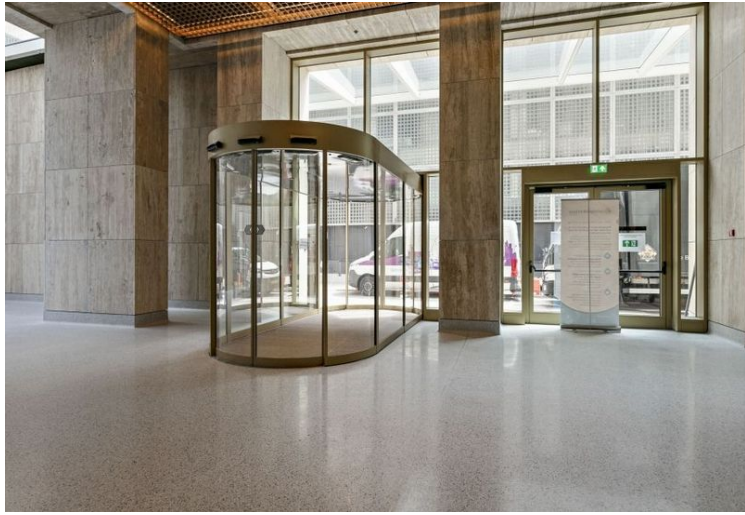
A++, expire date: 17 jan 2032



## Houtlaan 467 in focus





















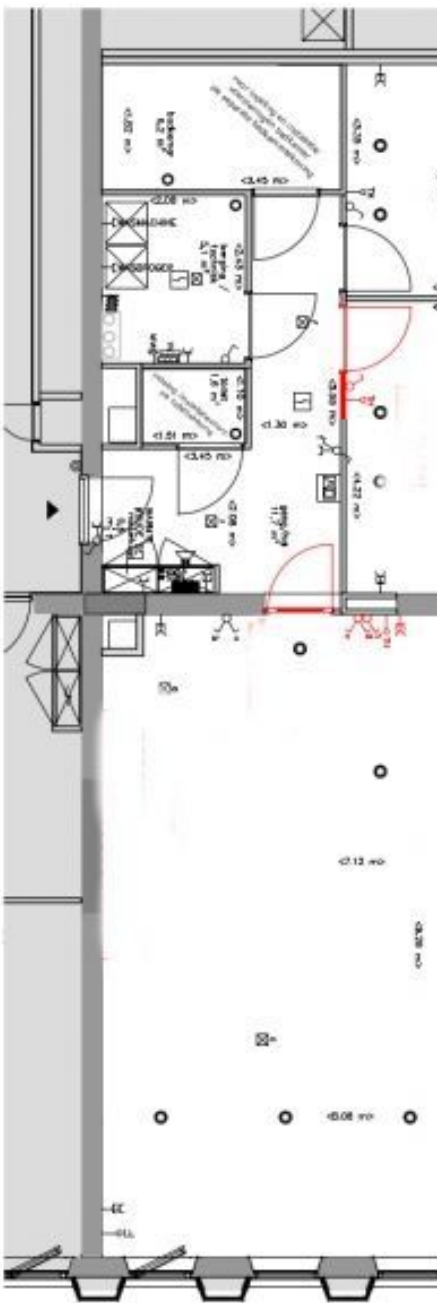












Uitvoersaat	opmerking	meten
door muren	0,50	-
platen	0,00	-
		0,00

opmerking:  
- net op schaal, uitsluitend bestemd voor koperstekker!  
- maatvoering betreft circa maten en is indicatief  
- positie ventilatie punten indicatief en nader te bepalen door installateur  
- positie plafondsteunpunten en overige installaties gemiddelden staan ter indicatie



 <b>Bnr. 525</b> Wonen		project <b>De Zalmhaven</b> woonwijk 47e verdieping kopergedee		project <b>8881</b> bestelling <b>V-525</b> order datum 13-06-2019	
ontwerp	MCA	tekenen	-	ontwerp	-



## Omschrijving Houtlaan 467

Stunning corner apartment in the newest landmark of Rotterdam. From the 47th floor of The Zalmhaven, you'll have a spectacular view of the city from 150 meters high. This luxurious home furthermore boasts a spacious living room, a bathroom and two bedrooms.

The Zalmhaven is the highest residential tower in the Netherlands and is located in the characteristic Scheepvaartkwartier. Classic and monumental buildings surround the new icon. Near regarded restaurants, shops, and cultural institutes like Kunsthall, Wereldmuseum and Depot.

### Ground Floor

- Stylish central entrance where a service manager is always present

### 47th Floor

- Entrance and hallway
- Spacious living room (70 m<sup>2</sup>) with a spectacular view over Rotterdam
- Primary bedroom (17 m<sup>2</sup>)
- Second bedroom (14 m<sup>2</sup>)
- 2 spacious balconies (12 m<sup>2</sup> and 7 m<sup>2</sup>)
- Fully equipped SieMatic kitchen with cooking island
- Bathroom with bath, 2 sinks, and a toilet

### Special details

- Indoor storage room 7 m<sup>2</sup> on the 4th floor
- Indoor bicycle storage
- A high parking space on the ground floor in a closed indoor parking garage.
- Unique living in an icon
- Perfect location
- The whole house has underfloor heating and cooling
- Energy label: A++
- Utilities water/electricity/internet/tv excluded
- Service costs included
- (Furnished or) Unfurnished
- Min 12 months (max 36 months)







## Omschrijving Houtlaan 467

- Diplomat clause possible

When you would like to rent an apartment, please keep the following bullets in mind:

- You need to have a valid residence permit and a labor contract
- The income is minimal 3 times the monthly rent or you receive an appropriate housing allowance

Does this apartment not yet fully meet your preferences? Please contact us for our complete availability!



Huisportaal.nl  
Vestdijk 180  
5611 CZ Eindhoven

Tel. helpdesk: 085-782.00.00  
Email: [info@huisportaal.nl](mailto:info@huisportaal.nl)  
Website: [www.huisportaal.nl](http://www.huisportaal.nl)

IBAN: NL20.RABO.0156.0304.03  
BTW: 8576.40.471.B.01  
KVK Eindhoven: 68903162