



Silodam 348
1013 AW Amsterdam

€ 2.950 p.m.



Alle kenmerken op een rij

Overdracht

Huurprijs	€ 2.950 p.m.
Aangeboden sinds	02 nov 2018
Status	verkocht
Huurperiode	
Borgsom	
Servicekosten	
Aanvaarding	in overleg

Bouw

Woningcategorie	appartement
Type woning	
Soort woning	
Kozijnen	aluminium, draaikiepramen

Indeling

Aantal kamers	
Aantal badkamers	1
Aantal toiletten	1
Kelder	nee
Zolder	nee
Garage	1
Aantal woonlagen	3

Gebied en inhoud

Perceeloppervlak (m ²)	
Woonoppervlak (m ²)	135
Inhoud (m ³)	370



Ligging

Ligging

Energie

Verwarming

stadsverwarming, elektrische

Soort warm water

Beglazing

hoogrendementsglas, dubbel, superisolerend

Isolatie

volledig

Energielabel

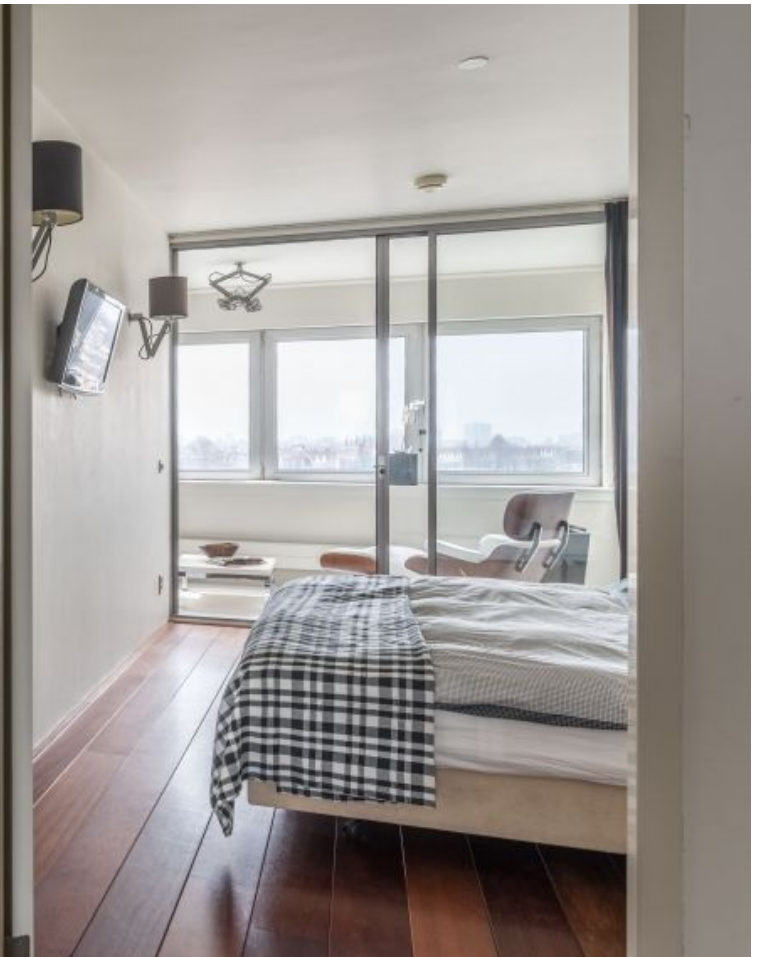
Energielabel

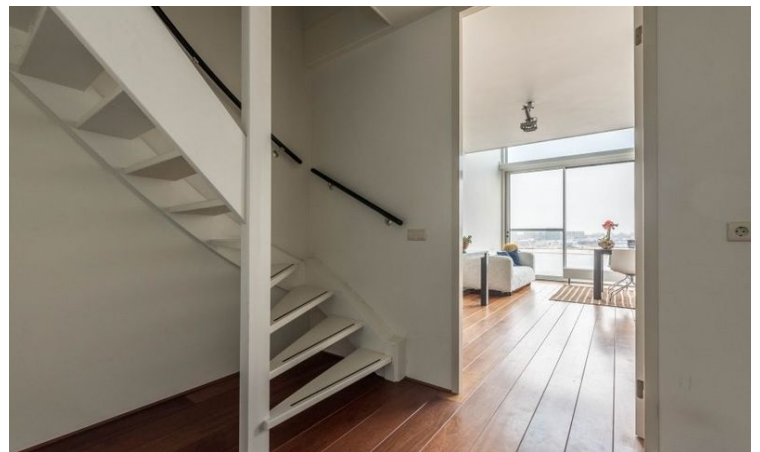
A, vervaldatum: 13 dec 2030



Silodam 348 in beeld

















Omschrijving Silodam 348

Beautiful furnished apartment of approx. 135m² with magnificent views of both the river 'Het IJ', the harbor 'De Oude Houthaven' and the city. With high-end finishes, Minotti furniture, Modular lighting and fully automated private underground parking.

The apartment is divided over the 7th and 8th floor of the iconic and modern complex 'De Silodam'. Built in 2002 and designed by renowned MVRDV Architects, a well known landmark, famous for its architecture and unique in it's kind. Large shared terraces and viewpoints on either side of the complex. Marina under the building.

In a very quiet location at the very end of a 300m long dam in the creative and inspiring (western) docklands and yet very close to the vibrant city centre. Within walking distance of all amenities and eye catchers such as Amsterdam Central Station, Adam Tower, EYE Filmmuseum and the Amsterdam Canal District.

Very close to Westerpark, Pontsteiger (with free ferry to popular NDSM Wharf area), Haarlemmerstraat and Haarlemmerdijk (awarded best Amsterdam shopping streets) with great diversity of authentic specialty shops (gifts, clothing, books, cooking, chocolate, cheese, fish, meat, restaurants, bars, coffee shops, film house, caterers, etc.).

The ring road A-10 and highways are both fast and easy to access.

Lay-out:

Lift or stairs to entrance on the 7th floor: hall, toilet room, storage room, large kitchen with dining area and huge windows (5.5m x 5.5m), view of the river IJ and mezzanine. Stairs to the 8th floor and hall with access to all rooms: living room with river view, storage/washing room, luxurious bathroom with bath and separate shower, main bedroom, second bedroom (currently furnished as office), loggia (all with harbour view).

Particulars:

- Furnished apartment
- Very low energy costs
- Perfect location
- Free gym in the building
- Marina under the building





Omschrijving Silodam 348

- Rental price excluding utility costs G/W/E/I
- Rental price excluding private underground parking (optionally € 200 p.m.)
- Max dimensions car: 510 x 205 x 160cm (l x w x h). Max weight: 2000 kg.
- Available from 1st of November 2022
- Not available for sharing
- Proof of income / employment contract required
- For viewings contact: +31 628 450 114





Huisportaal.nl
Vestdijk 180
5611 CZ Eindhoven

Tel. helpdesk: 085-782.00.00
Email: info@huisportaal.nl
Website: www.huisportaal.nl

IBAN: NL20.RABO.0156.0304.03
BTW: 8576.40.471.B.01
KVK Eindhoven: 68903162